

## 'THE ALPINE'

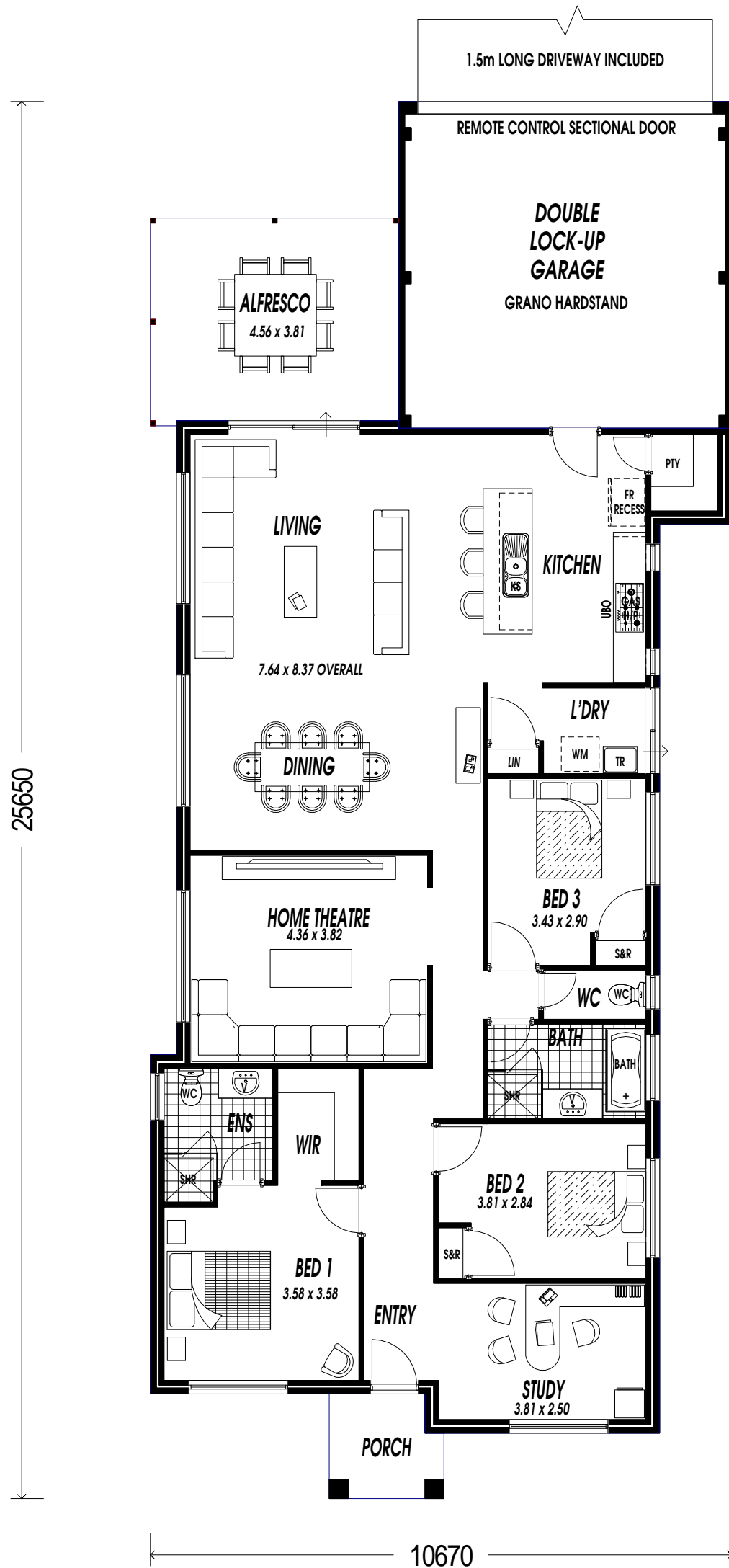
- ENQUIRIES AT ALL DISPLAY CENTRES -

HOUSE= 166.27m<sup>2</sup>  
 GARAGE= 36.66m<sup>2</sup>  
 ALFRESCO= 17.00m<sup>2</sup>  
 PORCH= 4.13m<sup>2</sup>  
**TOTAL AREA= 223.725m<sup>2</sup>**

**Content**  
 LIVING  
 The Home Builders

ACN 055 245 308  
 6 Gould Street,  
 Osborne Park W.A. 6017  
 P.O. Box 1101  
 Osborne Park W.A. 6917  
 PH (08) 9202 5222  
 FAX (08) 9202 5233

© COPYRIGHT TO CONTENT LIVING



## 'THE ALPINE'

- ENQUIRIES AT ALL DISPLAY CENTRES -

HOUSE= 166.27m<sup>2</sup>  
 GARAGE= 36.66m<sup>2</sup>  
 ALFRESCO= 17.00m<sup>2</sup>  
 PORCH = 4.13m<sup>2</sup>  
**TOTAL AREA= 223.725m<sup>2</sup>**

**Content**  
 LIVING  
 The Home Builders

ACN 055 245 308  
 6 Gould Street,  
 Osborne Park W.A. 6017  
 P.O. Box 1101  
 Osborne Park W.A. 6917  
 PH (08) 9202 5222  
 FAX (08) 9202 5233

© COPYRIGHT TO CONTENT LIVING